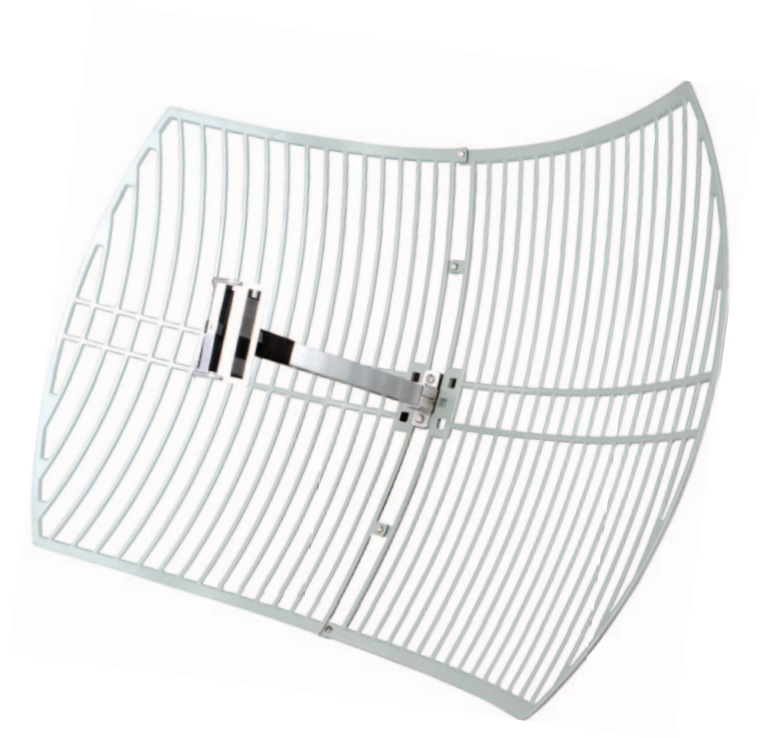


## 2.4GHz 24dBi Grid Parabolic Antenna

### TL-ANT2424B

#### ⦿ Features:

- 24dBi directional operation, ideal for extraordinary long distance point to point connection
- Weather proof design, suitable for all weather conditions
- N Female connector, applicable in most outdoor solutions

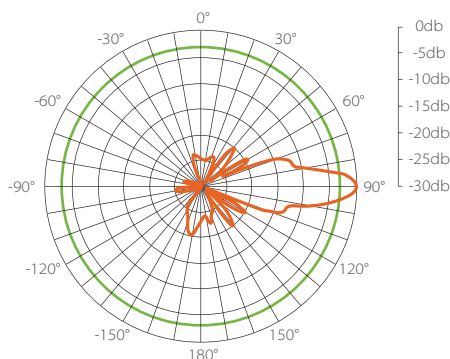


#### ⦿ Description:

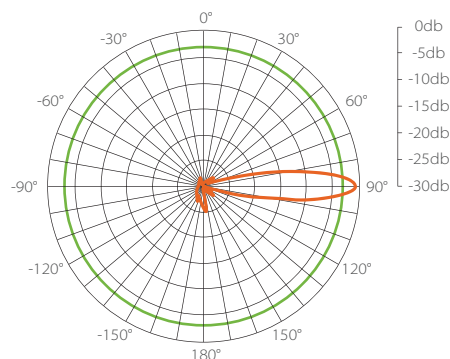
The TL-ANT2424B 24dBi directional antenna is ideal for outdoor use by attaching to your wireless access points/routers. It could be used for long distance point-to-point connection, providing your stable wireless links. It is very easy to use, no configuration or software installation required.

#### ⦿ Radiation Patterns:

V-Plane Co-Polarization Pattern



H-Plane Co-Polarization Pattern



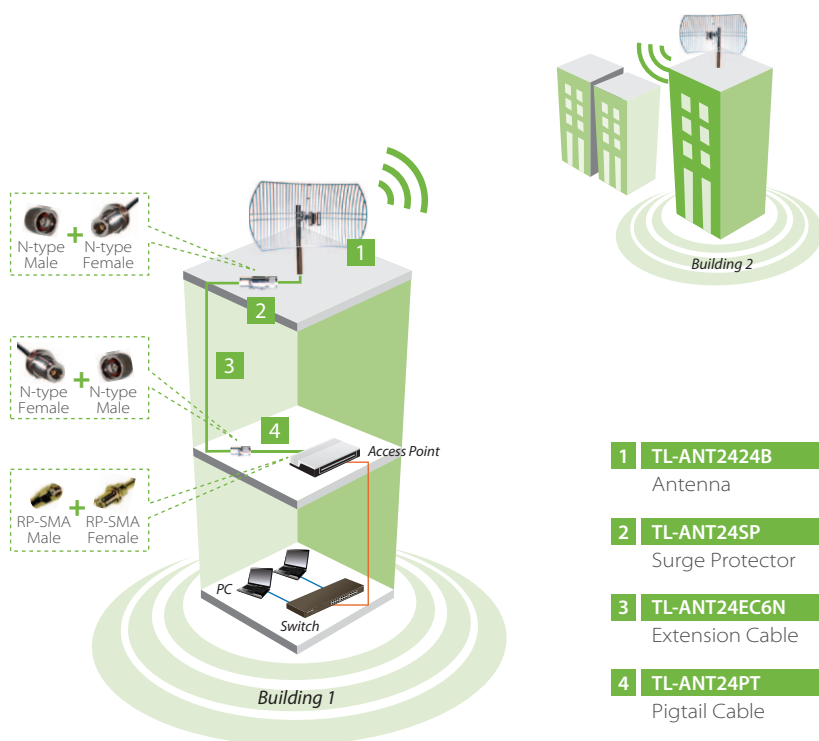
## ◎ Specifications:

Frequency Range	2.4~2.4835GHz
Gain (Exclude Cable Loss)	24dBi
VSWR	≤1.5
HPBW/H(°)	10
HPBW/V(°)	14
F/B Ratio	>30dB
Impedance	50 Ohms
Admitted Power	100W
Interfaces	N Female (Jack)
Polarization	Vertical or Horizontal
Mounting Mast Diameter	Ø30~Ø50 mm
Mounting	Wall Mount / Pole Mount
Survival Wind Speed	216Km/hr (134Miles/hr)
Standards	RoHS, WEEE
Operating Temp.	-40℃~60℃(-40°F~140°F)
Storage Temp.	-40℃~60℃(-40°F~140°F)

## ◎ Diagram:

### Outdoor Point to Point Application

*Simple and Convenient Installation with Excellent Transmission Range*



### Package:

- 24dBi Grid Parabolic Antenna
- Installation mounting kits
- User Guide

### Optional Accessories:

- 54Mbps High Power Wireless Access Point  
TL-WA5110G
- 150Mbps Wireless N Access Point  
TL-WA701ND